

HAL Lounge Chair

Jasper Morrison, 2021

mobiliadequada + **vitra.**



Creations by Jasper Morrison are not characterised by a strikingly new or fashionable design, but instead represent the update and perfection of a familiar typology – as demonstrated with the HAL Lounge Chair, which is Morrison's reinterpretation of the upholstered four-legged high-backed armchair.

Despite its compact dimensions, the lounge chair is exceptionally comfortable. It comes with soft loose seat and neck cushions or, if preferred, with an integrated seat cushion.

Thanks to its understated aesthetic, the HAL Lounge Chair is extremely versatile, suited to use at home or in public spaces, and can stand either alone, in pairs or in groups. However, a reduced design is not synonymous with bland neutrality: Jasper Morrison's products unmistakably bear his signature. Understated indeed

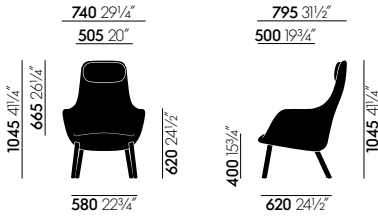
signifies that the design is not a fashionable trend, and that it instead exudes an aura of tranquility and will age well. The strength of the design becomes increasingly evident over time, when other more attention-grabbing contemporary creations have long faded into decline.

The lounge chair can be paired with the HAL Ottoman, allowing the user to enjoy its full comfort with their feet up. Both the HAL Lounge Chair and HAL Ottoman come with removable covers.

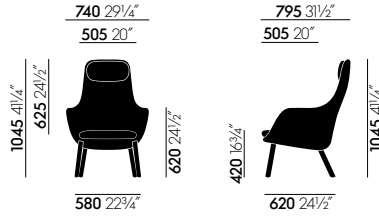
Materials

- **Chair/body:** fibreglass-reinforced plastic shell, encased in moulded polyurethane foam.
- **Neck cushion filling:** ball fibres and silico-nised fibres.
- **Filling loose seat cushion:** polyurethane foam.
- **Base:** natural oak or dark oak; connection between shell and base made of die-cast aluminium, powder-coated in dim grey.
- **Seat heights:** armchair with loose seat cushion 420 mm (320 mm with applied load, measured in accordance with EN 1335-1); armchair with integrated seat cushion 400 mm (320 mm with applied load, measured in accordance with EN 1335-1).
- **Ottoman:** plywood panel, polyurethane foam and polyester fibre.
- **Base:** natural oak or dark oak, leg connection in fibreglass-reinforced plastic.
- **Origin of wood:** oak (*Quercus robur*) from Western Europe and/or Poland.
- **Glides:** plastic glides for carpet or felt glides for hard floors.
- **Covers:** removable.

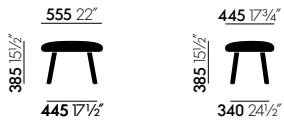
DIMENSIONS (in accordance with EN 1335-1 (2000))



HAL Lounge Chair integrated cushion

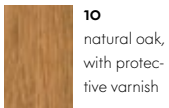


HAL Lounge Chair with loose cushion



HAL Lounge Chair Ottoman

COLOURS AND MATERIALS



Base
HAL Lounge Chair

COVER FABRICS

Cosy 2 Home/Office, F8o



Cosy 2 is a high-quality milled woollen cloth with a warm character. The lively melange yarn emphasises the fabric's natural colours – from delicate shades to vibrant hues – and gains added elegance with colour-coordinated stitching. The fabric offers thermal comfort and excellent durability, making it suited for upholstered furniture in office settings as well as residential applications.

Material	20% polyamide, 80% new wool
Weight	590 g/m ² (17.4 oz/y ²)
Width	154 cm +/- 2 cm (60")
Abrasion resistance	50,000 Martindale
Fastness to light	Type 6
Pilling	Grade 4-5
Fastness to rubbing	Grade 4-5 dry and wet

Cosy 2 is available in 15 colours.



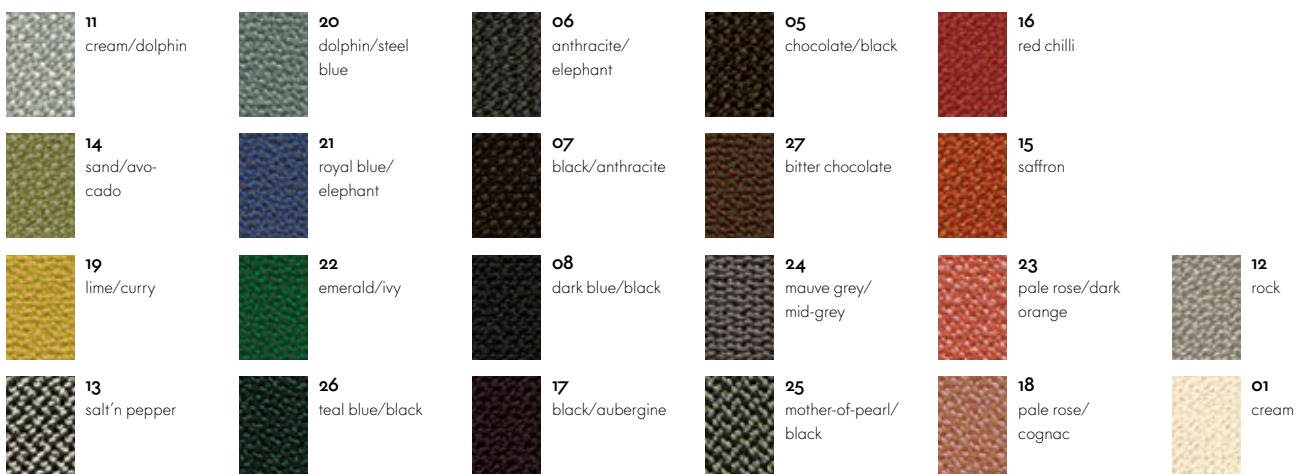
Credo Home/Office, F12o



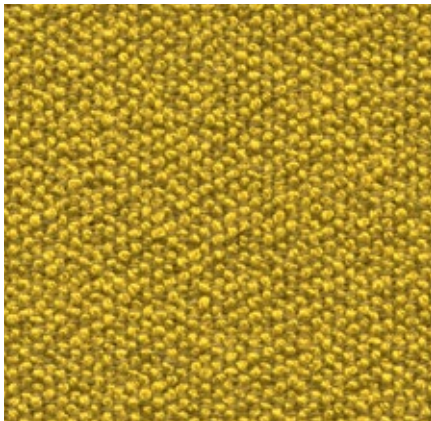
Credo is a durable woollen fabric made of premium worsted yarn with a pleasant feel. The two- and three-tone colours give this fabric a characteristic structure and vibrant appearance. Credo allows for an effective exchange of heat to ensure comfortable thermal conditions for the sitter. The fabric can also be used in office environments.

Material	5% polyamide, 95% new wool
Weight	640 g/m ² (18.9 oz/y ²)
Width	145 cm +/- 2 cm (57")
Abrasion resistance	100,000 Martindale
Fastness to light	Type 6
Pilling	Grade 4-5
Fastness to rubbing	Grade 4-5 dry and wet

Credo is available in 22 colours.



Dumet Home, F8o



Dumet is a cotton blend in a plain weave with a lively appearance. The natural mixed tones create an elegant look with an Italian flair. Dumet is soft and cool to the touch.

Dumet is available in 20 colours.

Material	9% polyamide, 46% cotton, 8% linen, 22% wool, 15% rayon
Weight	485 g/m ² (14.3 oz/y ²)
Width	147 cm +/- 2 cm (57")
Abrasion resistance	40,000 Martindale
Fastness to light	Type 5
Pilling	Grade 3-4
Fastness to rubbing	Grade 3-4 dry and wet



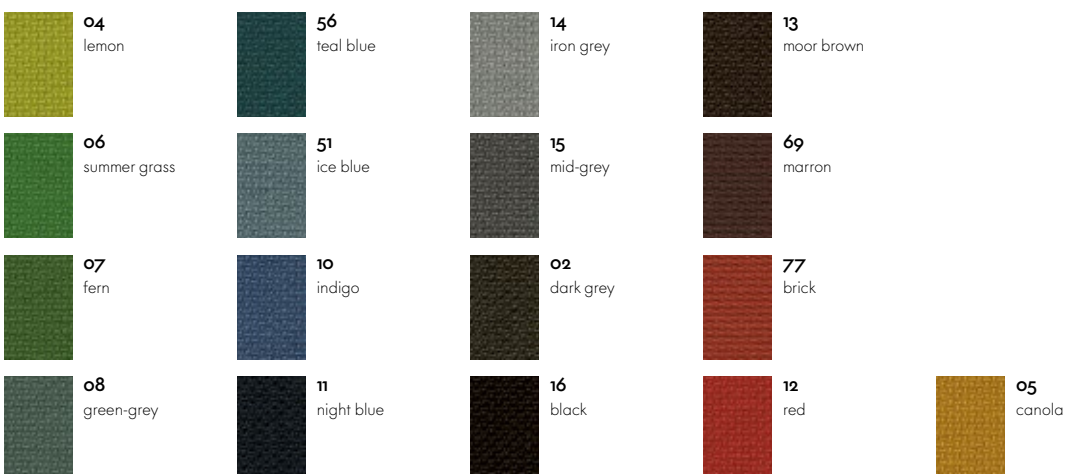
Volo Home/Office, F6o



Volo is a finely structured wool blend with a refined weave that gives it an elegant appearance. This expressive textile shows strong solid colours to full advantage while simultaneously offering pleasant tactile qualities. With its soft look and appealing texture, Volo is a perfect fit for home interiors, but it is also well suited for use in the contract sector.

Volo is available in 17 colours.

Material	15% polyamide, 85% new wool
Weight	435 g/m ² (12.8 oz/y ²)
Width	145 cm +/- 3 cm (57")
Abrasion resistance	100,000 Martindale
Fastness to light	Type 6
Pilling	Grade 4-5
Fastness to rubbing	Grade 4-5 dry and wet



Leather Premium Home/Office, L40



Leather Premium is a relatively smooth cowhide leather with a flat grain and fine top sheen. It is dyed-through and lightly pigmented. The semi-aniline leather is soft to the touch and available in 22 colours.

Material	Semi-aniline nappa leather with a very soft and supple feel
Fastness to light	Type 5
Thickness	1.1–1.3 mm
Fastness to rubbing	Grade 4 dry and wet



 /mobiliadequada

 @mobiliadequada

 mobiliadequada

 vendas@mobiliadequada.com.br

 +55 (19) 99753-6246

