

Organic Chair

Charles Eames & Eero Saarinen, 1940

mobiliadequada + **vitra.**



Organic Chair



Organic Highback

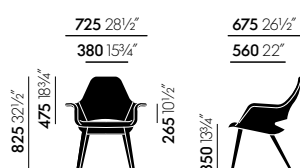
The Organic Chair – a small and comfortable reading chair – was developed in several versions for the 1940 ‘Organic Design in Home Furnishings’ competition organised by the Museum of Modern Art in New York. With its sculptural shapes, the design was ahead of the times. But due to the absence of suitable manufacturing techniques, the armchair never went into production. Not until 1950 did it become possible to manufacture and market organically shaped seat shells in large quantities, as exemplified by Charles and Ray Eames’s famous Plastic Armchair or Saarinen’s Tulip Chair.

The Organic Chair is also available in a version with an extended backrest and longer, wider armrests – the Organic Highback armchair. The Organic Conference version can be used as table seating.

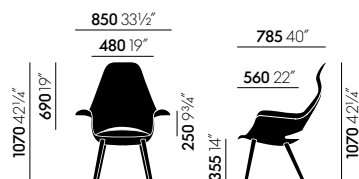
Materials

- **Seat shell:** laminated.
- **Upholstery:** polyurethane foam with fabric cover.
- **Legs:** black ash or natural oak (both from Western Europe, Poland).
- **Glides:** fitted with plastic glides for carpet, felt glides for hard floors additionally included.

DIMENSIONS (in accordance with EN 1335-1)



Organic Chair



Organic Highback

Organic Conference

Charles Eames & Eero Saarinen, 1940

mobiliadequada + **vitra.**



Organic Conference

The Organic Chair – a small and comfortable reading chair – was developed in several versions for the 1940 ‘Organic Design in Home Furnishings’ competition organised by the Museum of Modern Art in New York. With its sculptural shapes, the design was ahead of the times. But due to the absence of suitable manufacturing techniques, the armchair never went into production. Not until 1950 did it become possible to manufacture and market organically shaped seat shells in large quantities, as exemplified by Charles and Ray Eames’s famous Plastic Armchair or Saarinen’s Tulip Chair.

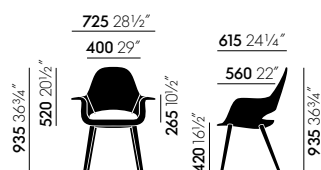
The Organic Chair is also available in a version with an extended backrest and longer, wider armrests – the Organic Highback armchair. The Organic Conference version can be used as table seating.

The Organic Conference chair, which can be combined with a wide variety of conference and meeting tables, offers supreme seating comfort thanks to its biomorphically shaped shell. Designed by Charles Eames and Eero Saarinen in 1940 as part of their entry for ‘Organic Design in Home Furnishings’, a competition organised by the Museum of Modern Art in New York, this chair has long been regarded as an iconic classic.

Materials

- **Seat shell:** laminated.
- **Upholstery:** polyurethane foam with fabric cover.
- **Legs:** black ash or natural oak (both from Western Europe, Poland).
- **Glides:** fitted with plastic glides for carpet, felt glides for hard floors additionally included.

DIMENSIONS (in accordance with EN 1335-1)



Organic Conference

COLOURS AND MATERIALS

mobiliadequada + **vitra.**



68
black ash



10
natural oak,
with protective
varnish

Legs

Cosy 2 Home/Office, F80



Cosy 2 is a high-quality milled woollen cloth with a warm character. The lively melange yarn emphasises the fabric's natural colours – from delicate shades to vibrant hues – and gains added elegance with colour-coordinated stitching. The fabric offers thermal comfort and excellent durability, making it suited for upholstered furniture in office settings as well as residential applications.

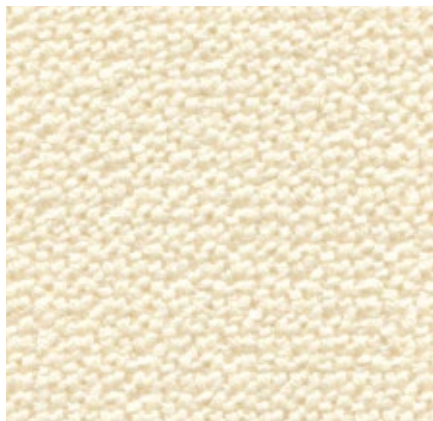
Cosy 2 is available in 15 colours.

mobiliadequada + **vitra.**

Material	20% polyamide, 80% new wool
Weight	590 g/m ² (17.4 oz/y ²)
Width	154 cm +/- 2 cm (60")
Abrasion resistance	50,000 Martindale
Fastness to light	Type 6
Pilling	Grade 4-5
Fastness to rubbing	Grade 4-5 dry and wet



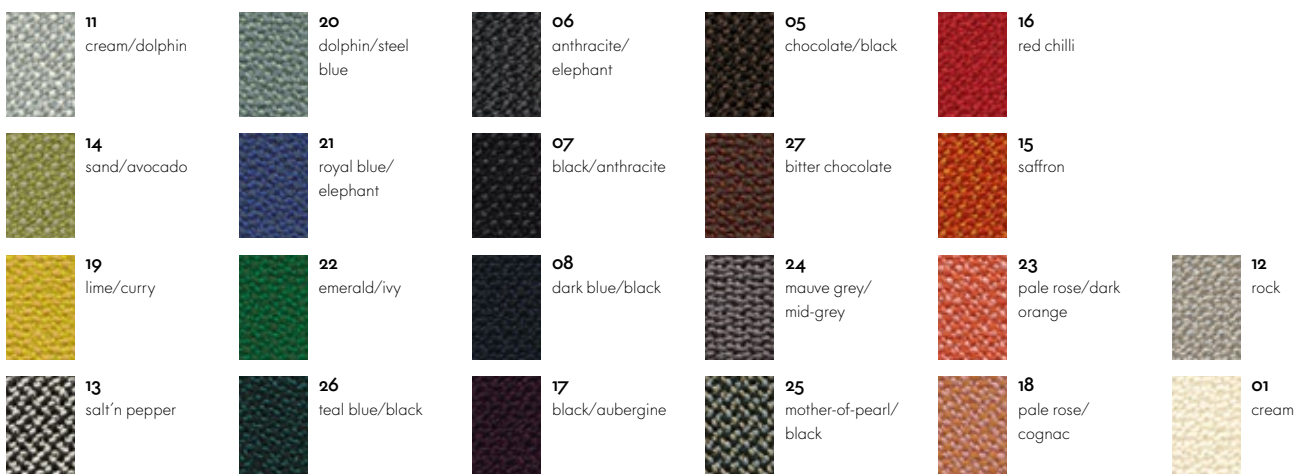
Credo Home/Office, F120



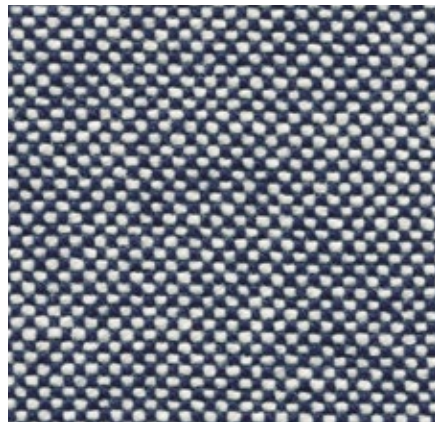
Credo is a durable woollen fabric made of premium worsted yarn with a pleasant feel. The two- and three-tone colours give this fabric a characteristic structure and vibrant appearance. Credo allows for an effective exchange of heat to ensure comfortable thermal conditions for the sitter. The fabric can also be used in office environments.

Credo is available in 22 colours.

Material	5% polyamide, 95% new wool
Weight	640 g/m ² (18.9 oz/y ²)
Width	145 cm +/- 2 cm (57")
Abrasion resistance	100,000 Martindale
Fastness to light	Type 6
Pilling	Grade 4
Fastness to rubbing	Grade 4-5 dry and wet



Hopsak Home/Office, F6o

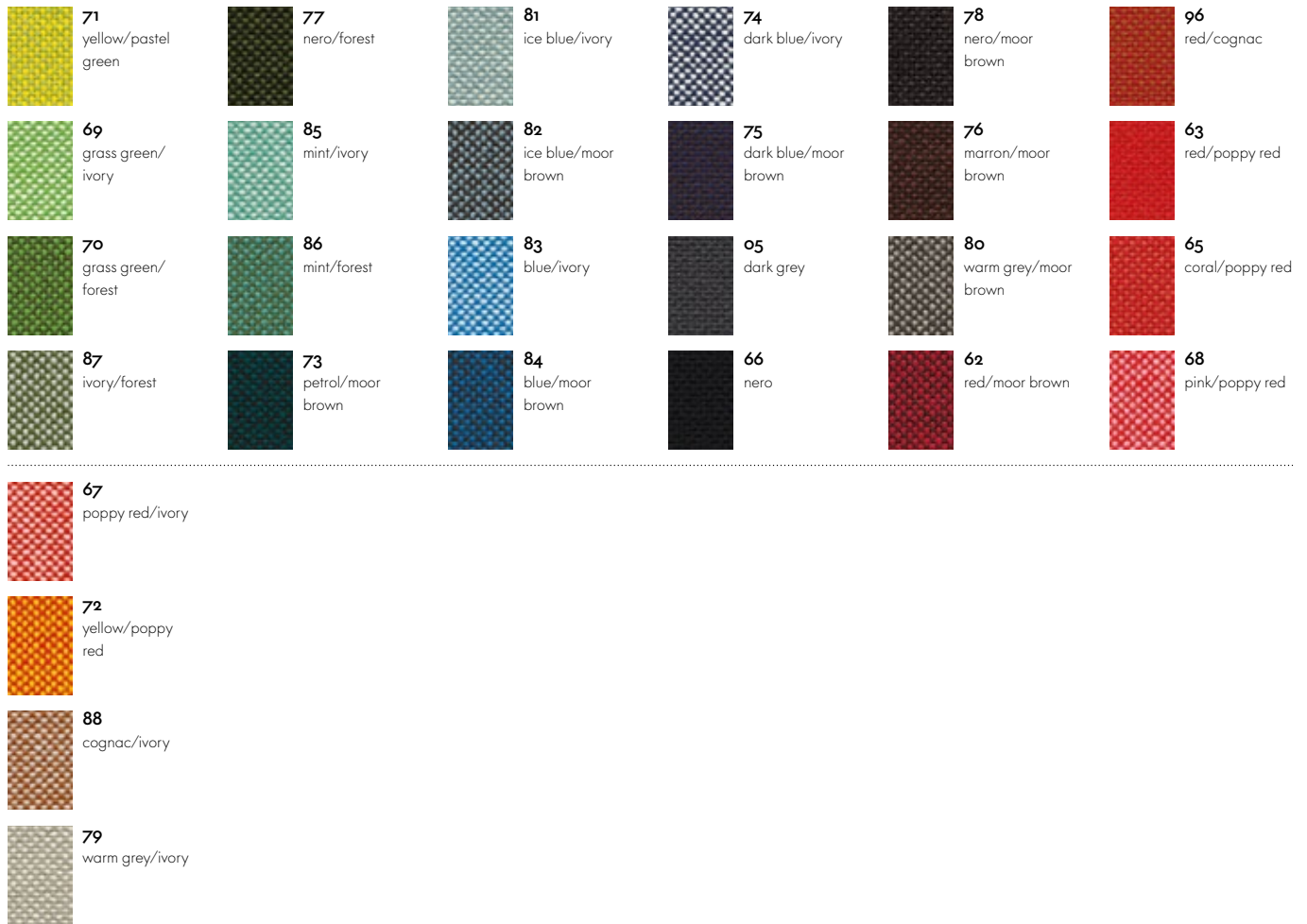


Hopsak is an expressive, flat plain-weave fabric made of polyamide. The duotone colours offer a multitude of design possibilities in high-contrast, brightly hued or subtle combinations of warp and weft threads. Highly durable and robust, Hopsak can be used in private interiors as well as public areas.

Hopsak is available in 35 colours.

mobiliadequada + **vitra.**

Material	100% polyamide
Weight	550 g/m ² (16.2 oz/y ²)
Width	127 cm +/- 2 cm (50")
Abrasion resistance	200,000 Martindale
Fastness to light	Type 6
Pilling	Grade 4-5
Fastness to rubbing	Grade 4-5 dry and wet



Tonus Home, F100



Tonus is a classic woollen cloth in a plain weave with an appealingly soft and flexible feel. The deep intensity of Tonus colours – ranging from warm and earthy golds that evoke oriental myths and spices to cool nordic hues in the aquamarine spectrum – lend a unique richness to the fabric.

Tonus is available in 14 colours.

mobiliadequada + **vitra.**

Material	90% new wool, 10% helanca
Weight	490 g/m ² (14.5 oz/y ²)
Width	140 cm (55")
Abrasion resistance	100,000 Martindale
Fastness to light	Type 5
Pilling	Grade 3
Fastness to rubbing	Grade 3-4 dry and wet



57
lime green



02
dark blue



55
hibiscus



58
grass green



43
truffle



56
dark magenta



50
blue



01
black



03
red



51
royal blue



54
dark red



53
dark orange



52
dark yellow

 /mobiliadequada

 @mobiliadequada

 mobiliadequada

 vendas@mobiliadequada.com.br

 +55 (19) 99753-6246

 (19) 3491-1845

